

# Design and Implementation of a Contactless Smart House Network System

Mohammed Issam Younis, Taif Fadhil Hussein

Department of Computer Engineering, College of Engineering, University of Baghdad, Iraq

---

## Article Info

### Article history:

Received Oct 06, 2017

Revised Jun 10, 2018

Accepted Jun 30, 2018

---

### Keyword:

Arduino

IoT

Raspberry Pi

ZigBee

---

## ABSTRACT

The Internet of Things (IoT) technology is every object around us and it is used to connect these objects to the Internet to verify Machine to Machine (M2M) communication. The smart house system is the most important application of IoT technology; it is increase the quality of life and decrease the efforts. There were many problems that faced the existing smart house networking systems, including the high cost of implementation and upgrading, high power consumption, and supported limited features. Therefore, this paper presents the design and implementation of smart house network system (SHNS) using Raspberry Pi and Arduino platforms as network infrastructure with ZigBee technology as wireless communication. SHNS consists of two main parts: the main station part and the wireless house nodes part. The local wireless communication between the house nodes and the main station is done through ZigBee technology with low power and low data rate. The mode of operation of these house nodes can be configured dynamically by the end user and determined multicast or broadcast operation according to the user requirements. The implementation and upgrading of SHNS are costless, flexible and required less power comparing with other reviewed systems.

Copyright © 2018 Institute of Advanced Engineering and Science.  
All rights reserved.

---

## Corresponding Author:

Mohammed Issam Younis,

Department of Computer Engineering, College of Engineering,

University of Baghdad, Baghdad, Iraq.

Email: younismi@coeng.uobaghdad.edu.iq , younismi@gmail.com

---

## 1. INTRODUCTION

Smart house systems are an extension type of building automation. Smart house primarily decreases the efforts of human and improve the connection to the house with enhanced service, facility, and security. A smart house is now widespread as the concept of Internet of Things (IoT) technology has attached to it. With the aid of IoT technology, Smart house controls the house devices such as control of air conditioning, lighting, heating, opening and closing door and monitoring other household appliances. Any electric device of house connects with each other in smart house system network. These devices are associated with this system to give control from any PC, laptop, smartphone or tablet that has an Internet access. Through the exchange of information technologies, the house devices can run in more intelligent with the support of IoT technology which results in more convenience, power efficiency, safety and facility [1]. Smart house system is the way of managing smart devices, that which understanding the events of real actions and convert that to a stream of data to produce more safety, ease, security and also energy and cost saving which is very beneficial in today's environment [2].

The examination survey of the smart house system and how to use its, depend on the requirements in the nations. The number of using smart house systems reach to 6.6 million and expected to develop intensely and reach to 44.9 million in 2020 [3] as shown in Figure 1. There are a lot of related works in the field of smart houses, this type of system is developed rapidly with the development of technology. Most of the researchers aim to obtain many features to control and access house appliances in flexible and easy

manner. Teymourzadeh *et al.* (2013) proposed a system to control home appliances using PIC16F887 with GSM [4]. AT commands send through GSM network to monitor the home appliances. High coverage area and high security are the advantages of this system but the disadvantages are the cost of SMS and it does not support the current state of the appliances unless the user asked for it.

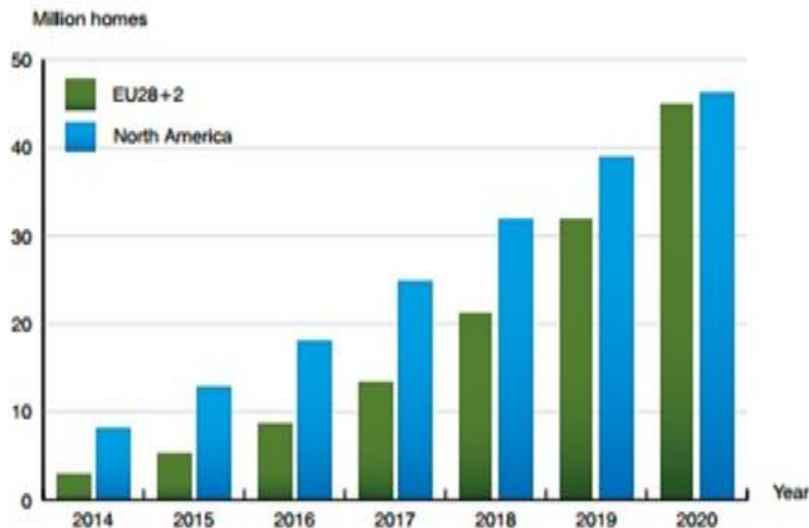


Figure 1. The number of using smart house systems [3]

Bharanialankar and ManikandaBabu (2014) proposed a system to control the device in the form of SMS by using GSM network provided with an AVR PIC microcontroller [5]. The user enters commands which send via SMS to GSM module that is connected to the AVR. It receives the commands and uses it to communicate with the modem and control the appliances. However, the disadvantage of this system is the cost of GSM network.

Jivani (2014) presented the system module to monitor the home appliances based on GSM technology via SMS services [6]. The Adriano board microcontroller is used to interface the devices through GSM modem. It uses the "App Inventor" visual programming platform to create an Android application to user interface design. The user sends commands via SMS messages from the android application to control the appliances remotely. The disadvantages of this system are the reliability and cost of SMS and the impossibility to update the user interface according to the requirement.

Rao and Uma (2015) presented home automation using a smartphone and Raspberry Pi [7]. It is designed to help the user and elderly people to control home devices through their own smartphone and make their life more independent. They can control any appliances connected to Raspberry Pi. It focuses on control the door sensor, light switch, and webcam surveillance.

Azni *et al.* (2016) presented a wireless home automation system using Wi-Fi [8]. The end user can control and monitor the home devices by using a web server or android application. It uses Restful Application Programming Interface (API) framework and other functions to use Hypertext Transfer Protocol (HTTP) request to control the General-purpose input/output (GPIO) of Raspberry Pi. This system used to turn on/off the electrical appliances of home wirelessly through a Wi-Fi connection.

Jabbar *et al.* (2016) proposed a smart home system focuses on the utilization of the IBoard Adriano microcontroller and the XBee with the interface through Android smartphone application [9]. The IBoard is a different Adriano board which have many features like Ethernet port, XBee socket interface, Micro SD socket and an ATMEGA32. Moreover, it works as web server connects the system to the network through Ethernet by the router and it allows a user to control the house appliances through an Android application. Android platform access by IP address and it consists of on/off button for switches and status declaration in addition to the automatic button for electronic work.

Yi *et al.* (2016) proposed a system of controlling the house using ZigBee [10]. It used LM3S8962 32-bit processor as a master controller of the system and to transmit and receive data over TCP/IP protocol through gateway interface. The ZigBee coordinator connected to the master controller and ZigBee routers

connected to the home devices and used the STC89C52 processor as the main processor in the terminal home node.

Sayuti *et al.* (2017) presented a smart home and an ambient assisted living (SHAAL) system based on the internet of things [11]. This system consists of two parts: the network part and the application part. The network part used ZigBee technology and different types of sensors to develop this system. The server of this network operated on the third generation (3G) to connect to the gateway and cloud network. The performance delay of this system is less than other systems however the cost of implemented and tested was more than other systems.

Gunawan *et al.* (2017) proposed a prototype of a smart home control system (SHCS) [12]. This system used four type of sensors to integrated with the home environment. It allowed the users to switch on and off any home devices remotely through the internet of things. It used Arduino Mega, Ethernet shield, and APC220 wireless in the actual design of hardware. The home devices are integrated successfully with control system through relay boards. The overall performance of this system was developed as a prototype.

Gunawan *et al.* (2018) presented an enhance performance of a smart home system and evaluated the performance of the previous systems [13]. The presented system also used internet of things technology and different type of sensors to integrated with the home environment. A solar charger added to this system which increases the whole performance including hardware and software. The results of this system are tested in a real environment and improve the performance compared with the previous systems.

Therefore, there are many challenges that face the smart house networking system, including the high cost of implementation and upgrading, high power consumption, and supported limited features such as the limitation of access only single room and fixed the configuration of a system. Some of the current system as explained in the previous section using license bands like GSM and others using Wi-Fi or Bluetooth, all of its required high-power consumption, limited in the range of transmitting, static configuration and upgrading, and required a separated web server for gateway node and data storage. This paper presents a wireless house network system based on IoT technology and combined the gateway node and web server in single Raspberry Pi unit. This system is used ZigBee communication to transmit and receive data between each node in-house and main station and real time communication to connect between the remote user and main station.

## 2. PROPOSED SYSTEM ARCHITECTURE

The architecture design of the smart house network system (SHNS) is adopted ZigBee technology to connect the devices of house, the ZigBee wireless technology protocol is chosen because it is low power M2M wireless network, unlicensed, low cost and can communicate in a different type of topology including mesh topology [14]. It consists of two main parts: the low cost, small size Raspberry Pi microprocessor is used as the main station part and combined the gateway node, database server and webserver on it instead of using any type of PC server.

The second part is the wireless house nodes which consist of three different nodes, Room1 and Room2 nodes are used to monitor and control the environment, the healthcare node is used to monitor the body temperature of the patient remotely. Room1 and Room2 nodes consist of Arduino, Arduino XBee Shield, XBee module and number of sensors. Healthcare node consists of XBee module and temperature sensor which are wearable by the patient to measure the heating dynamically from any location. The local and remote user can access this system using any web browser. The remote user can access the system by assigning a public IP address to the Raspberry Pi. Figure 2 shows the architectural design of the SHNS.

ZigBee standard defines three different types of devices: Coordinator device, Router device and End device. Coordinator device has the capability to act the controlling of personal area network and establish the connection of network. Router device has the capability to transmit and receive messages, and route these messages if necessary to extend the coverage area. Finally, End device has fewest features and can connect either to Coordinator device or to Router device. Each ZigBee network must have only one Coordinator device and unlimited number Router devices and End devices [15]. There are different types of XBee module and in SHNS XBee Pro S2 Module is used and it operates in two types of operation: transparent operation mode (AT operation mode) and application programming interface operation mode (API operation mode). AT mode is the default operation mode in XBee module and it considers a serial line replacement between the modules, all incoming UART data from DI pin is waited for RF immediately sending [16]. API mode is the advantage mode and a frame based mode. When XBee module running this mode all incoming and outgoing data are comprised of frames. These frames provided the address, payload data, AT command and other fields of configuration. This mode has the ability of multicast and broadcast transmission and can receive status frame about each sending frame also it contained a checksum for integration data [16].

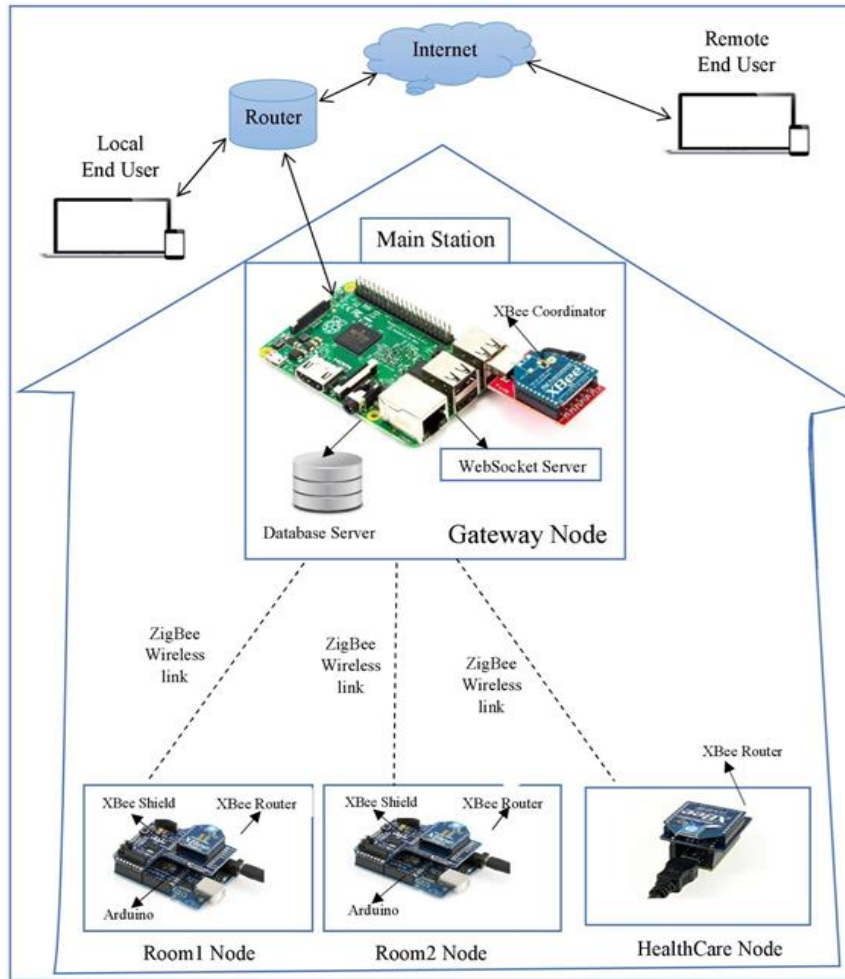


Figure 2. The architectural design of the SHNS

ZigBee considers the lowermost data rate and provide low power consumption with increase battery life compared with Bluetooth and Wi-Fi. Table 1 shows the comparison among ZigBee, Bluetooth and Wi-Fi [17].

Table 1. Comparison between Wi-Fi, Bluetooth and ZigBee [17]

Features	Wi-Fi IEEE 802.11	Bluetooth IEEE 802.15.1	ZigBee IEEE 802.15.4
Application	Wireless LAN	Cable Replacement	Control and Monitor
Frequency Bands	2.4 GHz	2.4 GHz	2.4 GHz, 868 MHz, 915 MHz
Data Rate	1 to 11 Mbps	1 to 3 Mbps	20 to 250 Kbps
Range (Meters)	1 – 100	1 – 10	1 – 75 and more
Battery Life (Days)	0.1 – 5	1 – 7	100 – 7000
Nodes Per Network	30	7	65,000
Topology	Tree	Tree	Star, Tree, Cluster Tree and Mesh
Bandwidth	2 – 100 Mbps	1 Mbps	20 – 250 Kbps
Memory	100 KB	100 KB	32 – 60 KB

### 3. HARDWARE AND SOFTWARE DESIGN OF SHNS

#### 3.1. Design of Wireless House Nodes

The wireless house nodes are chosen as a prototype of necessary required sensor and actuator nodes in each house. The Room1 and Room2 nodes are used to environment monitoring of temperature, humidity, gas and smoke detection, and remote control of any appliances in these rooms through Internet using a number of sensors and relays. Health care node is a special dynamic health care node which holds to the

patient and can monitor his temperature remotely through the Internet or locally through local house network. Room1 and Room2 consist of Arduino Uno microcontroller with an open-source hardware and software platform and it can sense and control the environment through digital I/O pins and analog input pins [18]. XBee Pro Series2 is connect to each house node Room1 and Room2 and it considers a wireless data communication, based on IEEE 802.15.4 and ZigBee standard devices offered from Digi. [19]. It is low cost, low power, low data rate, and operates in 2.4 GHz frequency band.

The XBee Pro S2 comes with 20 pins function and configure as ADC or I/O line [19] [20]. Arduino XBee shield is an add-on board used to enable Arduino board to connect wirelessly to another board using XBee module. It is connected vertically on the top of Arduino and then XBee connects on the top of it [21]. DHT22 humidity and temperature sensor [22] and MQ-2 gas and smoke detection sensor [23] are the sensors that used in Room1 and Room2 nodes also an electrical switch relay [24] used in these nodes. The Healthcare node consist of only XBee Pro Series2 and LM35 temperature sensor [25]. The selection of these components facilitate the proof of concepts of adopting Zigbee technology and other components could be added without the loss of generality.

### 3.2. Design of Main Station

One of the hardware component that can be used as a server in IoT technology is Raspberry Pi. Which is a small size board computer, low cost, flexible, has an Extended GPIO port and can use for different purposes [26]. It considers the main station of the SHNS and included the gateway node, database server, webserver and user interfaces as shown in Figure 3. The XBee module that connected to Raspberry Pi is configured as coordinator and operated in API mode. The gateway node considers the communication layer between house nodes and main station. It has the ability of writing to and reading from the database and it is responsible to select the mode of operation and determined the house nodes that will be used to send and receive data between XBee modules in the dynamic configuration. The gateway node programmed using Python programming language with number of packages including MySQL-python package, XBee 2.1.0 package and PySerial 2.7 package. MySQL database is used to store the configuration table, control table and data tables of system. Apache web server with PHP programming language is used at the server side of SHNS. The End user can access the system interfaces through any PC or tablet or any device that has an Internet access.

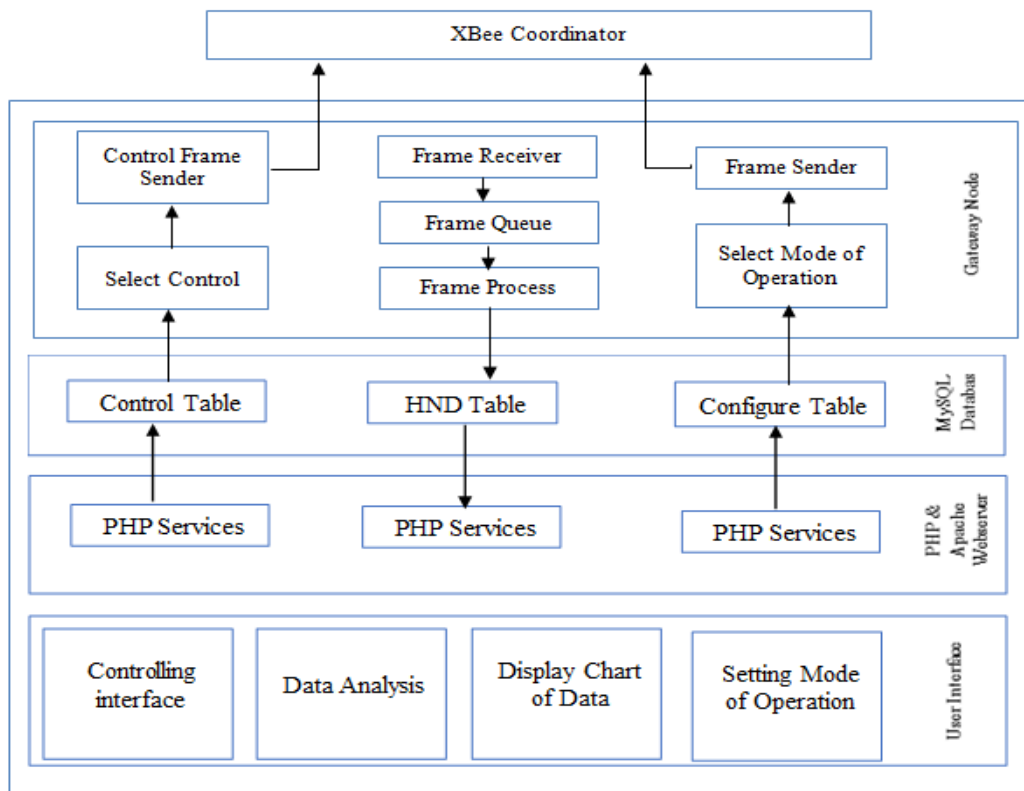


Figure 3. The detailed framework of the SHNS

### 3.3. Design of User Interface

The aim of designing the SHNS is to enable accessing from local and remote end user to house network and can select the required configuration to monitor its environments and control the appliances. So, four main web pages are designed that can verify the required purposes. The Setting page is constructed to manage the configuration of selecting the operation of house nodes. The Display page is constructed to display a real-time chart of selected house node. Chart of monitoring patient temperature in healthcare node and the humidity and temperature in Room1, Room1 nodes, all of information can be displayed from this page. The Data analysis page is constructed to access all the saved data in determined duration or in all time. Moreover, this page gives the ability to delete data when reaching special count. The Controlling page is constructed to control the state of each device connected to each house node. The designing of the user interface is done using HTML, CSS, PHP, and JavaScript for charting the data.

## 4. RESULTS AND ANALYSIS

The software implementation of Room1 and Room2 nodes is programmed using an open source Arduino IDE software. The software implementation of this node is responsible for many processes of receive data from XBee module through serial port and analysis it, collect data from DHT22 using its library and MQ-2 sensors, and then transmit these data to XBee module through serial port which transmits this data through ZigBee to XBee coordinator connected to the main station.

The last wireless house node is the healthcare node which has a dynamic moving capability for the patient. The implementation of this node is done through setting the first I/O pin of XBee module to ADC=1. This enables the connection of an LM35 temperature sensor to this pin, the real-time temperature of patient body sends periodically every 15 minutes and then XBee go to sleep mode. This cycle of sleeping 15 minutes and waking 5 minutes increasing the battery life for years. The reading and processing of the sampling data are done in the receiving process in the main station using Python programming language.

According to the last studies using modern methods, the normal temperature of human body is 37.0-degree C. This standard has a wide range of consideration and differs from person to person, the age of the person, type of measurement, the activity level of the person and in different time of day. Therefore, the range from 36.1-degree C to 37.3-degree C consider the accepted range and perfectly normal.

In general, and depending on the experiences, the average normal reading of body temperature is different according to the type of measurement, an armpit temperature is 0.7-degree C to 1.2-degree C higher than hand temperature and 0.3-degree C to 0.6-degree C lower than an oral temperature.

According to the experimented results that are obtained, the reading of this node must be calibrated by adding an offset value to obtain an approximately equal result to the standard medical value of temperature reading. Table 2 and Table 3 shows the reading of body temperature without calibration and with calibration and compare with the standard reading.

Table 2. The Reading of Body Temperature without Calibration

	Test1			Test2		
	Standard reading	Experimental reading	accuracy	Standard reading	Experimental reading	accuracy
P1	36.6	35.05	4.23	36.7	35.4	3.5
P2	36.8	35.52	3.47	36.6	35.5	3.005
P3	37.3	36.43	2.33	36.8	35.2	4.34
P4	36.9	35.62	3.46	37.4	36.7	1.87

Table 3. The Reading of Body Temperature with Calibration

	Test1			Test2		
	Standard reading	Experimental reading	accuracy	Standard reading	Experimental reading	accuracy
P1	37.3	36.95	0.938	36.7	36.4	0.817
P2	36.8	36.4	1.086	37.2	36.85	0.94
P3	37.21	36.81	1.07	37.6	37.13	1.25
P4	37.1	36.9	0.539	36.9	36.6	0.813

The most common evaluation metric to compare the resulting value with the standard medical value as stated in [27], is the accuracy which has an equation as follows:

$$\text{Accuracy} = \frac{\text{experimental value} - \text{standard value}}{\text{standard value}} \times 100\%$$

Where: Experimental value is the reading result from healthcare node.

Standard value is the reading from the thermometer Medical.

The hardware implementations of Room1 node and healthcare node are shown in Figure 4. The hardware implementation of the main station is shown in Figure 5 which consist of Raspberry Pi and XBee module as coordinator that are connected to Raspberry Pi through XBee adapter. Raspberry Pi is connected to the Internet through Ethernet port or wirelessly through Wi-Fi.

The software implementation of the main station node is done using many programming languages. The processes and algorithms of transmitting and receive frames are implemented using Python programming language. Python is an object-oriented, open source, portable and consider a high-level language with rich libraries. The collecting data from these operations is saved in MySQL database. MySQL is free, high performance, and have many other features. To access the data, there is a need for a server side and scripting languages. The Apache web server and PHP scripting language are used to access and modify the collected data.

The designing of the user interface is done using HTML, CSS, PHP, and JavaScript for charting the data. Figure 6 shows the chart of the patient body temperature measured from the healthcare node. An authorized user can access the SHNS to control and monitoring the environment of the house and select the required configuration from any web browser. Figure 7 shows the real-time chart of selected house node.

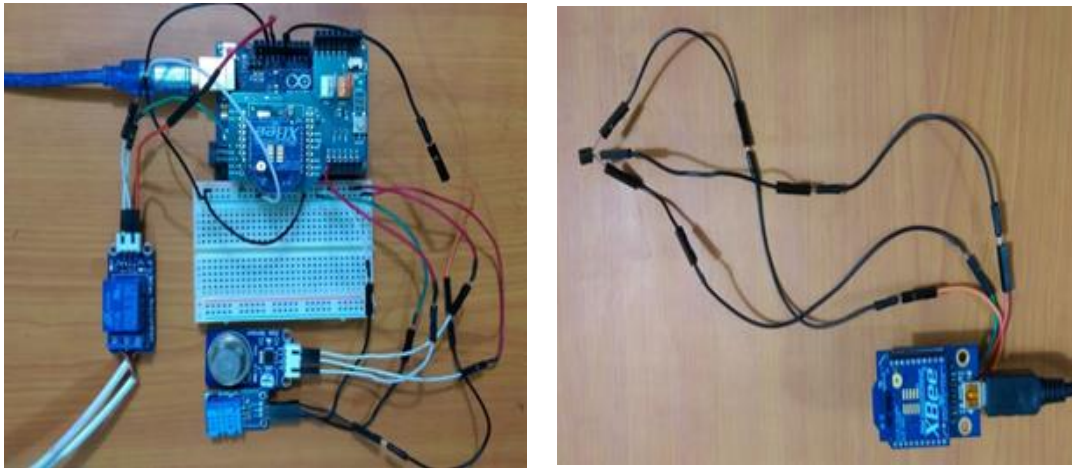


Figure 4. The hardware implementation of room1 and healthcare nodes



Figure 5. Hardware implementation of the main station node

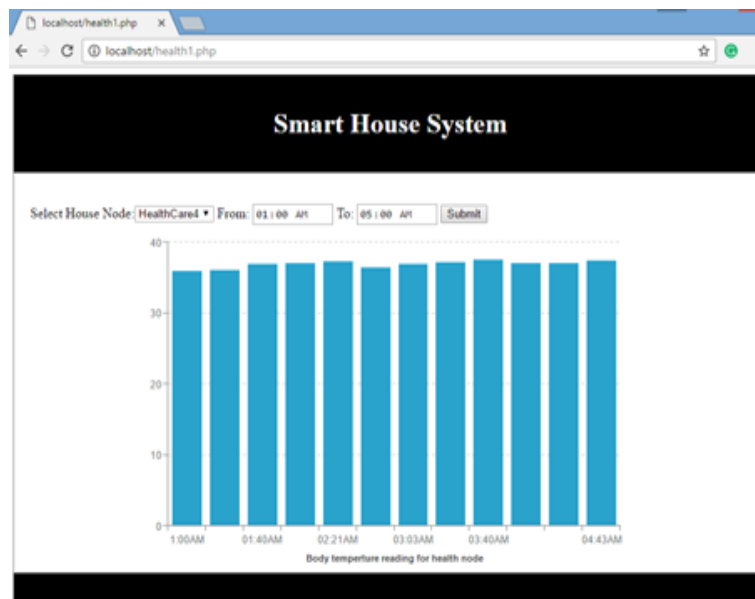


Figure 6. Temperature reading from healthcare node

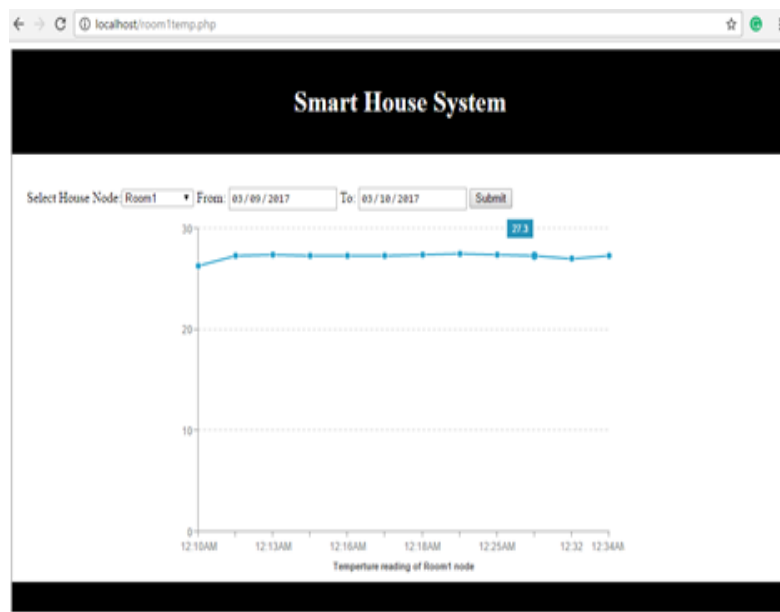


Figure 7. Temperature data of room1 node

## 5. CONCLUSION

A prototype of the SHNS is designed and implemented successfully. The SHNS users can select the required operation of house nodes through dynamic user configuration. The overall system is portable, low cost and low power consumption, because using of small size Raspberry Pi as a web server and gateway node eliminated the needed of separated PC server and minimize the cost significantly. The SHNS supported healthcare part to any patient in-house through easy manner and contactless method and that is considered an application of IoT technology. In addition, the data storage and analytic is done locally (i.e., provides fog computing without the need of cloud platform). There are many suggestions can be done in future including extend the work to support smart cities and smart building to connected all the required things to Internet and



verify the concept of IoT in the constructed application. In doing so, the big data analytic will be a major concern; however, fog computing could assist in minimizing the traffic from/to cloud environment.

## REFERENCES

- [1] P. N. Pawar, *et al.*, "A Survey on Internet of Things Based Home Automation System", International Journal of Innovative Research in Computer and Communication Engineering, Vol. 4, Issue 1, January 2016.
- [2] V. Vujovic and M. Maksimovic, "Raspberry Pi as a Sensor Web Node for Home Automation", Computers and Electrical Engineering, Elsevier, Vol. 44, Issue C, May 2015.
- [3] L. Kurkinen, "Smart Homes and Home Automation", Technical Report, Berg Insite M2M Research Series.
- [4] R. Teymourzadeh, *et al.*, "Smart GSM Based Home Automation System", IEEE Conference on Systems, Process & Control (ICSPC2013), Kuala Lumpur, Malaysia, pp. 306-309, 13-15 December 2013.
- [5] S. R. Bharanialankar and C. S. ManikandaBabu, "Intelligent Home Appliance Status Intimation Control and System using GSM", International Journal of Advanced Research in Computer Science and Software Engineering, Vol. 4, Issue 4, pp. 554-556, April 2014.
- [6] M. N. Jivani, "GSM Based Home Automation System using App-Inventor for Android Mobile Phone", International Journal of Advanced Research in Electrical, Electronics and Instrumentation Engineering, Vol. 3, Issue 9, pp. 1221-1228, September 2014.
- [7] P. B. Rao and S.K. Uma, "Raspberry Pi Home Automation with Wireless Sensors using Smart Phone", International Journal of Computer Science and Mobile Computing, IJCSMC, Vol. 4, Issue. 5, pg.797 –803, May 2015.
- [8] M. N. Azni, *et al.*, "Home Automation System with Android Application", IEEE 3rd International Conference on Electronic Design (ICED), Phuket, Thailand, pp. 299-303. August 11-12, 2016.
- [9] Z. A. Jabbar, *et al.*, "Wireless Home Network in Smart Home Control by using IBoard & Android Design", International Journal of Innovative Research in Electrical, Electronics, Instrumentation and Control Engineering, Vol. 4, Issue 4, pp. 178-183, April 2016.
- [10] X. J.Yi, M. Zhou and J.Liu, "Design of Smart Home Control System by Internet of Things based on ZigBee", IEEE, 11th Conference on Industrial Electronics and Applications (ICIEA), pp. 128-133, 2016.
- [11] H. Sayuti, *et al.*, "Smart Home and Ambient Assisted Living Based on the Internet of Things", International Journal of Electrical and Computer Engineering, Vol. 7, No. 3, June 2017.
- [12] Teddy Surya Gunawan, *et al.*, "Prototype Design of Smart Home System using Internet of Things", Indonesian Journal of Electrical Engineering and Computer Science, Vol. 7, No. 1, July 2017.
- [13] Teddy Surya Gunawan, *et al.*, "Performance Evaluation of Smart Home System using Internet of Things", International Journal of Electrical and Computer Engineering, Vol. 8, No. 1, February 2018.
- [14] ZigBee Alliance. [online] available: <http://www.zigbee.org/>. [Accessed 12 1 2018].
- [15] S. Farahani, "ZigBee Wireless Networks and Transceivers", First Edition, Elsevier Ltd 2008.
- [16] Digi International. "ZigBee RF Modules", User Guide, 2016.
- [17] O. G. Aju, "A Survey of ZigBee Wireless Sensor Network Technology: Topology, Applications and Challenges", International Journal of Computer Applications Vol. 130, Issue 9, November 2015.
- [18] Arduino Uno. [online] available: <https://www.arduino.cc/>. [Accessed 12 1 2018].
- [19] DIGI. [online] available: <https://www.digi.com/>. [Accessed 12 1 2018].
- [20] Digi International, "XBee and XBee-Pro RF Module", Product Manual, 2009.
- [21] Arduino XBee Shield. [online] available: <https://www.arduino.cc/en/Main/ArduinoXBeeShield>.
- [22] DHT22. [online] available: <https://www.adafruit.com/product/385>. [Accessed 12 1 2018].
- [23] Seeed, "Grove - Gas Sensor (MQ2)", User Manual, 2015.
- [24] Relay Board. [online] available: <https://www.sainsmart.com/8-channel-dc-5v-relay-module-for-arduino-pic-arm-dsp-avr-msp430-ttl-logic.html>, [Accessed 12 1 2018].
- [25] National Semiconductor, "LM35 Precision Centigrade Temperature Sensors", User Manual, November 2000.
- [26] Raspberry Pi 3 Model B. [online] available: <https://www.raspberrypi.org/products/raspberrypi-3-model-b/>.
- [27] Accuracy and Precision in Measurements. [online] available: [https://www.webassign.net/userimages/fgdennis@waynecc/lab\\_app\\_accuracy.pdf](https://www.webassign.net/userimages/fgdennis@waynecc/lab_app_accuracy.pdf). [Accessed 12 1 2018].

## BIOGRAPHIES OF AUTHORS



Mohammed Issam Younis obtained his Doctorate in Computer Engineering from Universiti Sains Malaysia in 2011. He had done the M.Sc. and B.Sc. in Computer Engineering from University of Baghdad in 2001 and 1997 respectively. His research interests are: Distributed System, Information Security and Cryptography, Parallel Processing, Algorithms, Computer Networking, Software Engineering, RFID, and IoT. He has various publications as books, thesis, journals, Invited IEEE Tutorials. He is associated with various committee like: Iraqi Union of Engineers, Cisco Networking Academy, Software Engineering Research Groups, AIDL Research Groups. He honored by different awards, medals, patents, and grants. Assoc. Prof. Dr. Younis is currently a faculty member and Cisco Instructor at the Computer Engineering Department, College of Engineering, University of Baghdad.



Taif Fadhil Hussein received the M.Sc. and B.Sc. in Computer Engineering from the University of Baghdad in 2017 and 2012 respectively. She is associated with various committee like: Iraqi Union of Engineers, and Cisco Networking Academy. Her research interests involve: wireless network, software engineering, computer networks, RFID development, computer architecture distributed computing, and IoT.