

Developing a grid-connected DFIG strategy for the integration of wind power with harmonic current mitigation

Hacil Mahieddine, Laid Zarour, Louze Lamri, and Nemmour Ahmed Lokmane

Electrical Engineering Department, Brothers Mentouri University, Constantine, Algeria.

Article Info

Article history:

Received September 22, 2018

Revised

Accepted

Keyword:

DFIG

Active power filter

Power quality

Wind power

LC filter

ABSTRACT

The aim of this paper is to present a study of the efficiency of the electrical part of a wind generation system. Two back-to-back PWM voltage-fed inverters connected between the stator and the rotor are used to allow bidirectional power flow. The second inverter grid side, has a role of a power active filter, to eliminate the harmonic generated by the non linear load, in the same time gives an active and reactive power needed by the rotor of DFIG. The harmonics of switching frequency in the current stator, pose a major problem in the moment where commutations in the diode bridge, to solve this problem, we introduce a small-sized passive LC filter for the purpose of eliminating high-frequency shaft voltage and grid current from a DFIG driven by a voltage-source pulse width-modulation rotor inverter controlled with SVM. The control theory is discussed, and the controller implementation is described. Design criteria are also given. The results of simulation tests show excellent static and dynamic performances.

Copyright © 201x Institute of Advanced Engineering and Science.

All rights reserved.

Corresponding Author:

Hacil Mahieddine

Departement of Electrical Engineering,

Brothers Mentouri University 1, 25000 Algeria

+213661771676

hacil2002@yahoo.fr

1. INTRODUCTION

Wind power was firstly used by sail ships in the Nile some 5000 years ago. The Europeans used it to grind grains and pump water in the 1700s and 1800s while in sailing ships [1]. The use of wind turbines to generate electricity can be traced back to the late nineteenth century with the 12kW DC [2]. The stimulus for the development of wind energy in 1973 was the price of oil and concern over limited fossil-fuel resources [1]. There are a few issues to worry about regarding the future energy production in the world. Now, of course, the main driver for use of wind turbines to generate electrical power is the very low CO_2 and they are competing with electric utilities in supplying economical clean power in many parts of the world and help limit climate change.

Today, Wind energy already plays a significant role in several European nations, and countries like China and India are rapidly expanding their capacity both to manufacture wind turbines and to integrate wind power into their electricity grids. The U.S. led the world in wind power installations for the third year in a row in 2007 [3]. Global wind capacity increased by more than 20,000MW, with 5,244MW installed in the U.S. Spain and China were the second and third largest markets last year with 3,515MW and 3,449MW of wind power capacity added respectively. According to European Commission targets, wind energy will continue to grow in Europe and will reach 69,900MW in 2010 [7]. In Germany, for example, wind power accounted for almost 10% of total electricity consumption in 2014 [6]. Such is the growth of wind energy that in the EU, 44% of new electricity generation capacity installed in 2015 was wind power. Total generation of the world has increased by 17.4% to amount to 841TW hours in 2015 [5]. According to the Global Wind Energy Association, the global wind power installed capacity is 486.66GW by the end of 2016 [4].

Major factors that have accelerated the wind-power technology development are as follows: [2]

- High-strength fiber composites for constructing large low-cost blades.

Journal Homepage: <http://iaesjournal.com/online/index.php/IJECE>

- Falling prices of the power electronics.
- Variable-speed operation of electrical generators to capture maximum energy.
- Improved plant operation, pushing the availability up to 95 percent.
- Economy of scale, as the turbines and plants are getting larger in size.
- Accumulated field experience (the learning curve effect) improving the capacity factor.

The electromagnetic conversion is usually achieved by induction machines or synchronous and permanent magnet generators. Squirrel cage induction generators are widely used because of their lower cost, reliability, construction and simplicity of maintenance but when it is directly connected to a power network, which imposes the frequency, the speed must be set to a constant value by a mechanical device on the wind turbine [8]. With increased penetration of wind power into electrical grids, DFIG wind turbines are largely deployed due to their variable speed feature and hence influencing system dynamics, it is an induction machine with wound rotor and a four-quadrant ac-to-ac converter setup connected to the rotor winding [9]. Although requiring a gearbox, the DFIG requires a converter of only 25% of the generator rating for an operating speed range of 0.75 to 1.25 per unit (p.u.) and is considered a lower cost, proven technology solution. DFIGs have long been considered as a good choice for variable speed generation systems [10], [11].

Power electronics loads inject harmonic currents in the ac system and increase overall reactive power demanded by the equivalent load [12]. These distortions, which are caused by harmonics, are one of the major power quality concerns in the electric power industry. And do not meet harmonic current content restrictions, as imposed by several international standards such as IEC 61000 and IEEE519 [13]. Different solutions to minimize the effects of nonlinear loads in electric power systems (nonsinusoidal voltages, harmonic currents) have been proposed in numerous researches. As a matter of fact, there are various types of compensators proposed to increase the power system quality. Traditionally, switched capacitors banks are used to compensate for reactive loads [13], [14]. However, the capacitance of the PFC and the source inductance create a parallel resonance. The other solution is to rectify it with line-commutated switches. Several strategies were proposed for diode rectifiers to further reduce the $(12m \pm 1)^{th}$ harmonics [13]. Several other solutions:

- Included additional active/passive components within the DC circuit.
- Proposed a parallel connected diode rectifier with an active interphase reactor.
- Proposed series-connected double three-phase diode rectifiers with auxiliary circuits. A problem of them is that the operation of the auxiliary circuit is very complicated.
- Proposed to use a series active filter, and use a square-wave inverters-based dominant harmonic active filter. [13], [15].

Active power filters are gaining more popularity due to their ability of handling higher switching frequencies by using faster power switches [16]. One of the active power filters, the shunt active filter has been researched and developed, and it has gradually been recognized as a feasible solution to the problems created by nonlinear loads. It is used to eliminate the unwanted harmonics and compensate fundamental reactive power consumed by nonlinear loads with injecting the compensation currents into the AC lines [17], [18].

A new technique was launched by P. Poure and all [19] and developed with Abolhassani and all [20], [21] integrated doubly fed electric generator instead of the active filter (IDEA) for variable speed wind energy conversion systems, in another paper Abolhassani and all [22] proposed approach consists of a synchronous generator with modification to its field excitation; Preceded by it Fuyuto Takase and all [23]. It is shown that, by injecting 2^{nd} , 4^{th} and 6^{th} harmonic currents into the field, a standard synchronous generator can be modified to generate 5^{th} and 7^{th} harmonics in the stator winding connected to the electric utility. But in a mechanical point of view of this technique, strong torque ripples because of the harmonic currents, the end of the current harmonics compensation in the absence of the wind and heating of the machine by eddy currents and hysteresis within the magnetic circuit with rapid destruction [24]-[26].

In response to these concerns, this paper presents the analysis, control and simulation validation of a vector controlled variable speed DFIG supplying a connected grid. Two back-to-back PWM voltage-fed inverters connected between the grid and the rotor are used to allow bidirectional power flow.

The purpose of the grid side converter is to maintain the dc link voltage constant. It has control over the active and reactive power transfer between the rotor and the grid and used to compensate the harmonics currents, while the rotor side converter is responsible for control of the flux, and thus, the stator active and reactive powers [30].

A vector control approach is adopted which enables the independent control of the active and reactive power flowing between the grid and grid-side converter. An LC-filter between the voltage-source converter VSC and the rotor DFIG is used to reduce the switching frequency harmonics injected in the line currents and eliminate high dv/dt , to avoid the overlap phenomenon in Diode Bridge, and ensure a good pace of current. We see also the absence of torque ripple and the continuity harmonic current filtering in wind absence. And generate power to the grid if nonlinear load arrest or both.

2. DFIG, ELECTRICAL MODEL WITH AN LC FILTER

The equations of a DFIG in a synchronously rotating dq reference frame, with the q-axis aligned along the stator flux vector position are given by

$$V_{sd} = R_s i_{sd} + \frac{d\phi_{sd}}{dt} - \omega_s \phi_{sq} \quad (1)$$

$$V_{sq} = R_s i_{sq} + \frac{d\phi_{sq}}{dt} + \omega_s \phi_{sd} \quad (2)$$

Rotor equations:

$$V_{rd} = R_r i_{rd} + \frac{d\phi_{rd}}{dt} - \omega_r \phi_{rq} \quad (3)$$

$$V_{rq} = R_r i_{rq} + \frac{d\phi_{rq}}{dt} + \omega_r \phi_{rd} \quad (4)$$

where $V_s = [V_{sd} V_{sq}]^T$, $V_r = [V_{rd} V_{rq}]^T$, $i_s = [i_{sd} i_{sq}]^T$ and $i_r = [i_{rd} i_{rq}]^T$, are the stator-side, rotor-side voltage, stator-side current, and rotor-side current, respectively. ω , represent the rotational speed. The superscripts s and r represent the space vectors that referred to stator and rotor references. Contrary, the correlation between the fluxes and the currents, in space vector notation, is given by:

Stator flux

$$\phi_{sd} = L_s i_{sd} + M i_{rd} = \phi_s \quad (5)$$

$$\phi_{sq} = L_s i_{sq} + M i_{rq} = 0 \quad (6)$$

Rotor flux

$$\phi_{rd} = L_r i_{rd} + M i_{sd} \quad (7)$$

$$\phi_{rq} = L_r i_{rq} + M i_{sq} \quad (8)$$

R , L , represent the resistance, inductance, respectively. The subscripts r , s stand for rotor side, stator side and M magnetization.

The electromagnetic torque can be expressed using the d - q components as follow:

$$T_e = \frac{pM}{L_s} (i_{rd} \phi_{sq} - i_{rq} \phi_{sd}) \quad (9)$$

Where p is the number of pole pairs Generally, the dynamic equation for a generator-wind turbine system [27], [28] is used to described the rotor mechanical speed ω_m , mechanical torque T_m , and electromagnetic torque T_e as

$$\frac{d\omega_m}{dt} = \frac{p}{J} T_m - \frac{p^2 M}{J L_s} (i_{rd} \phi_{sq} - i_{rq} \phi_{sd}) - \frac{f}{J} \omega_m \quad (10)$$

Where J is inertia constant, f friction coefficient, T_e can be calculated from (11), T_m is the output torque of wind turbine and can be obtained from the optimum torquespeed curve between the cut-in wind speed and limited wind speed as [28].

$$T_m = \frac{1}{2} \rho A R V_w^2 \frac{C_p(\beta, \lambda_i)}{\lambda} \quad (11)$$

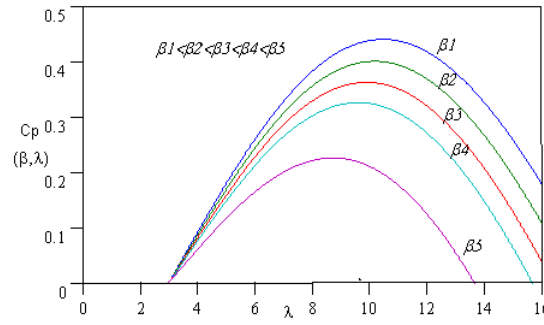


Figure 1. C_p characteristic of wind turbine

Where ρ is the air density being 1.225 kg/m^3 ; C_p is the performance coefficient of the wind turbine which is a function of the tip speed ratio, λ , and the blade pitch angle, β° . In this model, the wind speed V_w represents the mean value of the upstream wind and A is the area swept by the turbine blades.

The function $C_p(\lambda, \beta)$ in (12) has been modelled by using the equation proposed in [29].

$$C_p = (0.44 - 0.0167\beta) \sin\left[\frac{\pi(\lambda - 3)}{15 - 0.3\beta}\right] - 0.0184(\lambda - 3)\beta \quad (12)$$

The tip-speed- ratio (TSR) is defined as:

$$\lambda = \frac{D\omega_r}{2v} \quad (13)$$

D is the diameter of the area covered by the movement of the blades.

The maximum power point is obtained at $C_{pmax} = 0.48$, with optimum tip speed ratio $\lambda_\beta = 8.1$, and for a minimum blade pitch angle $\beta_{min} = 0$. Figure1 shows the W_T power characteristics, for various wind speed values as a function of the rotational speed.

Equations (5) and (6) give [30]:

$$i_{sd} = \frac{\phi_s}{L_s} - \frac{M}{L_s} i_{rd} \quad (14)$$

$$i_{sq} = -\frac{M}{L_s} i_{rq} \quad (15)$$

The electromagnetic torque T_e became:

$$T_e = -\frac{pM}{L_s} i_{rq} \phi_s \quad (16)$$

Assuming that the stator resistance is negligible compared with the magnetizing reactance and also that the stator flux vector has a constant magnitude and rotates at a constant angular speed equal to the supply frequency. Equations (1), (2) are simplified to (17) and (18) [31]:

$$V_{sd} = 0 \quad (17)$$

$$V_{sq} = \omega_s \phi_s = V_s \quad (18)$$

The stator active and reactive powers of a DFIG can thus be derived using equations (14), (15), (17) and (18), giving [19]:

$$\begin{aligned} P_s &= V_{sd} i_{sd} + V_{sq} i_{sq} = V_{sq} i_{sq} = -V_s \frac{M}{L_s} i_{rq} \\ Q_s &= V_{sq} i_{sd} - V_{sd} i_{sq} = V_{sq} i_{sd} = V_s \left(\phi_s - \frac{M}{L_s} i_{rd} \right) \end{aligned} \quad (19)$$

As can be seen, P_s and Q_s are proportional to and respectively. Provided the magnitude of stator flux is kept constant, both power components can be controlled linearly by adjusting the relative rotor current components.

where the equation (3) and (4) based of equation filter LC show in Figure2, the current injected in the rotor is i_r , but i_f is the current in output of converter, tension applied in the rotor represented by the capacitor voltage V_c , and the only harmonic frequency absorbed from the capacitor filter, the general equation of inverter ,LC filter and rotor is given by (20), (21) and (22), where V_{rd} and V_{rq} is the translate frame abc to dq of $[V_{ca} V_{cb} V_{cc}]$ [32], [33].

$$\dot{x} = [i_r \quad i_f \quad V_c]^T \quad (20)$$

and

$$[A] = \begin{bmatrix} -\frac{R_r}{L_r} & 0 & -\frac{1}{L_r} \\ 0 & -\frac{R_f}{L_f} & -\frac{1}{L_f} \\ -\frac{1}{C_f} & \frac{1}{C_f} & 0 \end{bmatrix} \quad (21)$$

$$i_f = F(p)U + G(p)V \quad (22)$$

With F and G define by the relations (23) and (24) [33]-[35]:

$$F(S) = \frac{1}{a_1 S^3 + a_2 S^2 + a_3 S + a_4} \quad (23)$$

$$G(S) = \frac{1 + C_f S(L_f S + R_f)}{(L_r S + R_r)(1 + C_f S(L_f S + R_f)) + (L_f S + R_f)} \quad (24)$$

S: Laplace operator

The denominator coefficients in (23) are given by:

$a_1 = L_r L_f C_f$, $a_2 = L_r R_f C_f + L_f R_r C_f$, $a_3 = L_r + L_f + R_r R_f C_f$, $a_4 = R_r + R_f$ If the all resistances effects are neglected, relation (23) becomes:

$$F(S) \approx \frac{1}{L_r L_f C_f S^3 + (R_r + R_f)S} \quad (25)$$

Finally, the resonance frequency of the LC filter is computed as:

$$\omega_a = \frac{1}{\sqrt{\frac{L_r L_f}{L_r + L_f} C_f}} \quad (26)$$

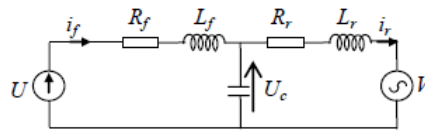


Figure 2. Equivalent circuit of one phase LC filter system

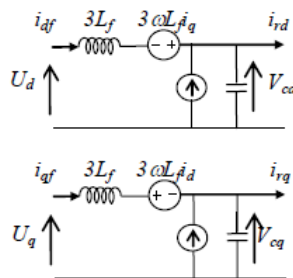


Figure 3. Equivalent circuit of three phase LC filter system in dq frame

$$\begin{aligned}
\frac{d}{dt}i_{dh} &= \frac{1}{3L_g}(V_{gd} + 3wL_g i_{qh} - d_{dh}V_o) \\
\frac{d}{dt}i_{qh} &= \frac{1}{3L_g}(V_{gq} - 3wL_g i_{dh} - d_{qh}V_o) \\
\frac{d}{dt}V_c &= \frac{1}{C_d}(\frac{3}{2}(d_{dh}i_{dh} + d_{qh}i_{qh}) - i_o) \\
V_o &= V_c + R_c(\frac{3}{2}(d_{dh}i_{dh} + d_{qh}i_{qh}) - i_o)
\end{aligned} \tag{28}$$

With $L = L_g + L_h$ and $R = R_g + R_h$
 So, the current i_o is given by:

$$i_o = (\frac{3}{2}(d_{df}i_{df} + d_{qf}i_{qf})) \tag{29}$$

$$i_h = i_h + i_p \tag{30}$$

Where
 i_h harmonic current
 i_p power current

$$i_o' = d_{dh}i_{dh} + d_{qh}i_{qh} \tag{31}$$

$$i_o = S_1i_{af} + S_2i_{bf} + S_3i_{cf} \quad \text{and} \quad i_o' = S_1'i_{ah} + S_2'i_{bh} + S_1'i_{ch} \tag{32}$$

S' grid converter switch (GSC)

S rotor converter switch (RSC)

4. RESULTS AND ANALYSIS

The proposed control strategy is applied to a WECS equipped with a 12kW DFIG. The system parameters are given in the table(1-4). The switching frequency of the RSC is chosen equal to 2.5kHz and GSC controlled with 6A hysteresis band.

In the first time the non linear load is not connected, the grid side inverter gives an active and reactive power needed by the rotor of DFIG, Figure 5, Figure 7 show the performance of implantation of the LC filter between the rotor and RSC, where the ripple caused by the commutation frequency is eliminate in the stator current, active and reactive power and torque. Figure 6 and Figure 8, the grid current spectrum, before and after put of LC filter, prove the enhancement of the grid current THD which is reduced from about 5.83% to 2.6%.

At time $t = 0.5s$ and $t = 0.6s$ an step in the reference of active power and reactive from 5Kw to 10Kw and 2kVar to 5KVar respectively, present the good response to this control and stability of system.

In the second study at $t = 1s$ the diode bridge connected, the grid side inverter give power and compensate harmonic current Figure 9 and figure 10 illustrate the performance of the proposed method where the THD reduced from 27.88% to 3.89% in the norm recommended.

Figure 11 showed the correct tracking of the harmonic current to the reference, and the advent of the LC filter where cancellation of the switching frequency at the stator current. The DC capacitor voltage is maintained constant practically at its command value of 900V before $t = 0.3s$, by the control of the GSC as shown in Figure 11. During active filtering operation, one can notice small oscillations of V_d at a frequency of 300Hz. However, these oscillations do not affect the DC bus stability.

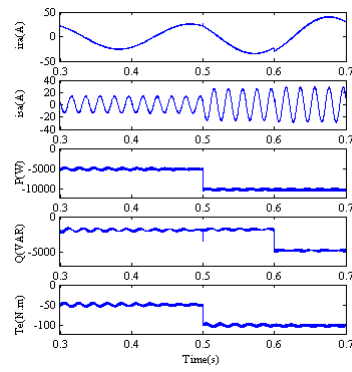


Figure 5. i_{ra} phase a rotor current, i_{sa} phase a stator current, P and Q active and reactive power, T_e electromagnetic torque without LC filter

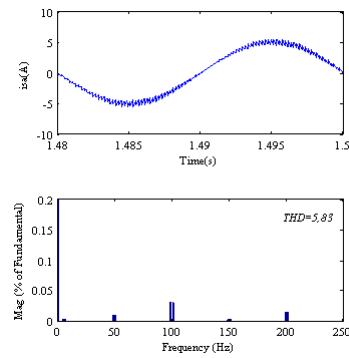


Figure 6. i_{sa} phase a stator current and spectrum analysis without LC filter

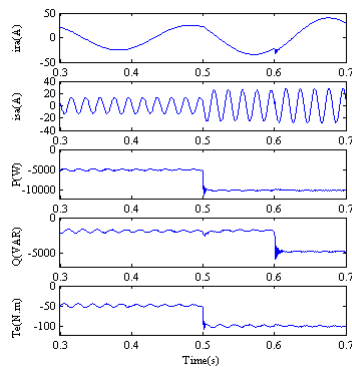


Figure 7. i_{ra} phase a rotor current, i_{sa} phase a stator current, P and Q active and reactive power, T_e electromagnetic torque with LC filter

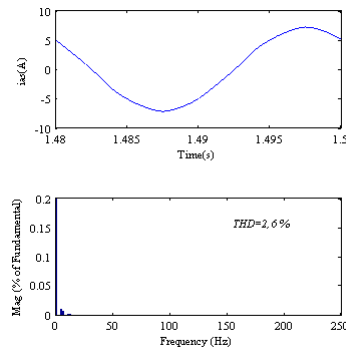


Figure 8. i_{sa} phase a stator current and spectrum analysis with LC filter

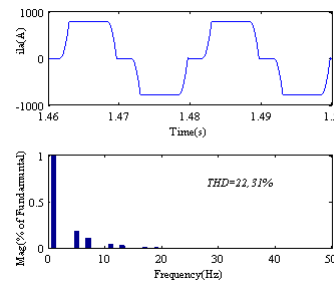


Figure 9. i_{La} phase a nonlinear load current and spectrum analysis

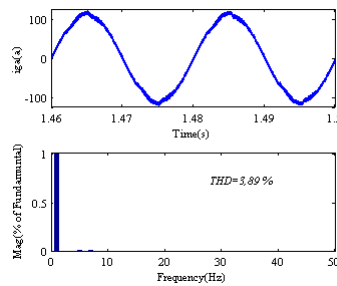


Figure 10. i_{ga} phase a grid current and spectrum analysis

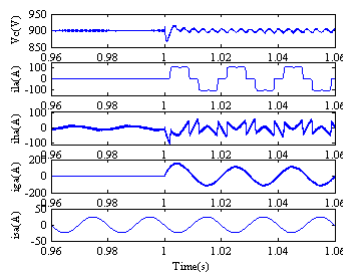


Figure 11. V_c DC voltage, i_{La} Load current, i_h grid side inverter current, i_{ga} grid current, and i_{sa} effects of the LC filter on the DFIGs stator current waveform

5. CONCLUSION

In this paper, a novel approach has been proposed to manage and improve the quality of the grid power using a WECS equipped by a DFIG. The RSC is controlled in such a way to manage between production of maximum active power and power quality improvement without any over-rating. The performance of the grid side converter achieves an active and reactive green power source with active filtering capability. The proposed topology has been shown to be capable of reducing the torque ripple and providing an almost sinusoidal voltage to the grid with an optimum SVM method is proposed to obtain the best line-current THD with reduced switching losses with an LC filter normally required at the output of a PWM inverter rotor to assist in the switching device commutation and switching harmonic filtering. Simulation results show excellent steady state and dynamic performances of the developed prototype.

Table 1. DFIG parameters

Variable	designation	value
L_s	Stator inductance	0.084 H
L_r	Rotor inductance	0.081 H
M	Mutual inductance	0.078 H
R_s	Stator winding resistor	0.455
R_r	Rotor winding resistor	0.62 Ω
J	Combined moment of inertia of machine and turbine	0.3125 kg.m ²
P	Number of pole pairs	2

Table 2. Grid parameters

Variable	designation	value
L_g	Grid inductance	0.000115 H
R_g	Grid resistor	0.0005 Ω
F	frequency	50 Hz
V_g	Grid voltage	400 V

Table 3. Nonlinear Load parameters

Variable	designation	value
L_d	DC side Inductance	0.005 H
R_d	DC side Resistance	5 Ω

Table 4. GSC and LC filter parameters

Variable	designation	value
R_h	GSC Resistance	0.0062 Ω
L_h	GSC Inductance	100 μF
R_f	LC Resistance	1.7 m Ω
L_f	LC Inductance	0.0203 H
C_f	LC capacitor	8.1057 μF
C_d	DC bus capacitor	300 μF

REFERENCES

- [1] LM Wind Power. Wind powers development over time. <https://www.lmwindpower.com>
- [2] Bin Wu, Yongqiang Lang, Navid Zargari, "Power Conversion and Control of Wind Energy Systems" *John Wiley and Sons*. 2011, 2011.
- [3] Angelika Pullen, Steve Sawyer, "Global Wind 2007 Report," *Global Wind Energy Council*.
- [4] A. Gaillard a, P. Poure, "Variable speed DFIG wind energy system for power generation and harmonic current mitigation," *Renewable Energy*, 234 (2009) 15451553.
- [5] <https://www.evwind.es/2016/06/23/8-countries-that-produce-the-most-wind-energy-in-the-world/56665>

- [6] Alexander Zerrahn, "Wind Power and Externalities," *Ecological Economics*, Volume 141, November 2017, Pages 245-260.
- [7] Takashi Ikegami, Chiyori T. Urabe, "Numerical definitions of wind power output fluctuations for power system operation," *Renewable Energy*, Volume 115, January 2018, Pages 6-15.
- [8] Adel Abdelbaset, Yehia S. Mohamed. Urabe, "Wind Driven Doubly Fed Induction Generator," *Power Systems book series*, pp 7-20, Springer International Publishing AG 2018.
- [9] A.Khattara, M.Bahri, "Line-Fault Ride-Through (LFRT) Capabilities of DFIG Wind Turbine Connected to the Power System," *APCBEE Procedia* 7 (2013), 189-194; ICBET 2013: May 19-20, 2013, Copenhagen, Denmark.
- [10] Chetan S. Rawal, Anwar M. Mulla, "An AC-AC Converter for Doubly Fed Induction Generator Driven By Wind Turbine," *International Journal of Scientific and Research Publications*, Volume 4, Issue 12, December 2014.
- [11] Rajveer Mittal, K.S.Sandhu, "An Overview of Some Important Issues Related to Wind Energy Conversion System (WECS)," *International Journal of Environmental Science and Development*, Vol. 1, No. 4, October 2010.
- [12] Muhammad Shahbaz, "Harmonics Filtering of Distributed AC System," *Master of Science in Electric Power Engineering*, September 2012, Norwegian University of Science and Technology.
- [13] Shoji Fukuda, Shigete Ueda, "Auxiliary Supply Assisted Harmonic Suppression for 12-Pulse Phase-Controlled Rectifiers," *The 2010 International Power Electronics Conference - ECCE ASIA - Sapporo, Japan* 21-24 June 2010.
- [14] Nikunj Shah, "Harmonics in power systems Causes, effects and control," *Siemens Industry*, 2013,usa.siemens.com/lv-drives.
- [15] Shoji Fukuda, Issei Hiei, "Auxiliary Supply-Assisted 12-Pulse Phase-Controlled Rectifiers With Reduced Input Current Harmonics," *IEEE Transactions on Industry Applications*, vol. 44, no. 1, january/february 2008.
- [16] M. Tavakoli Bina, E. Pashajavid, "An efficient procedure to design passive LCL-filters for active power filters," *Electric Power Systems Research*, 79 (2009) 606614.
- [17] Rajasekhareddy Chilipi, Naji Al Sayari, "Third order sinusoidal integrator (TOSSI)-based control algorithm for shunt active power filter under distorted and unbalanced voltage conditions," *Electrical Power and Energy Systems*, 96 (2018) 152162.
- [18] Yacine Terriche, Josep M. Guerrero, "Performance improvement of shunt active power filter based on non-linear least-square approach," *EElectric Power Systems Research*, 160 (2018) 4455.
- [19] P. Poure, S. Saadate, "Filtrage dynamique d'harmoniques d'un reseau lectrique a l'aide d'une machine a double alimentation commande par le rotor," *J. Phys. III France*, 5 (1995) 2087-2099.
- [20] T. Abolhassani, Peyman Niazi, "Sensorless Integrated Doubly-Fed Electric Alternator/Active Filter (IDEA) for Variable Speed Wind Energy System," *Proc. IEEE Industry Application Society* 2003, 2003.
- [21] T. Abolhassani, Prasad Enjeti, "Integrated Doubly-Fed Electric Alternator/Active Filter (IDEA), a Viable Power Quality Solution, for Wind Energy Conversion Systems," *Conference Record of the 2004 IEEE Industry Applications, 2004. 39th IAS Annual Meeting*, Seattle, WA, USA, 3-7 Oct. 2004.
- [22] T. Abolhassani, A. Toliyat, "An electromechanical Active Harmonic Filter," *IEMDC 2001, Boston, MA*, 2001.
- [23] Fuyuto Takase, Masatoshi Toininaga, "Harmonic Compensation Using a Synchronous Machine with Resonant Field Circuits," *IEEE Transactions on Energy Conversion*, Vol. 12, No. 2, June 1997.
- [24] Andreas Krings, Juliette Soulard, "Overview and comparison of iron loss models for electrical machines," *International Conference on Ecological Vehicles and Renewable Energies*, Monaco, March 25e28, 2010.
- [25] Eyhab El-Kharashi, "Detailed comparative study regarding different formulae of predicting the iron losses in a machine excited by non-sinusoidal supply," *Energy*, 73 (2014) 513-522.
- [26] Damian Kowal, Peter Sergeant, "Rotor speed control of doubly fed induction generator wind turbines using adaptive maximum power point tracking," *IEEE Transactions on Magnetics*, vol. 51, no. 1, January 2015.
- [27] Dinh-Chung Phan, Shigeru Yamamoto, "Comparison of Iron Loss Models for Electrical Machines With Different Frequency Domain and Time Domain Methods for Excess Loss Prediction," *Energy*, 111 (2016) 377-388.
- [28] Jiabing Hu, Heng Nian, "Direct Active and Reactive Power Regulation of DFIG Using Sliding-Mode Control Approach," *IEEE Transactions on Energy Conversion*, Vol. 25, no. 4, December 2010.
- [29] Ezzeldin S. Abdin, Wilson Xu, "Control Design and Dynamic Performance Analysis of a Wind Turbine-Induction Generator Unit," *IEEE Transactions on Energy Conversion*, Vol. 15, no. 1, March 2000.
- [30] Badrul H. Chowdhury, Srinivas Chellapilla, "Double-fed induction generator control for variable speed wind power generation," *Electric Power Systems Research*, 76 (2006) 786800.
- [31] Dinh-Chung Phan, Shigeru Yamamoto, "Rotor speed control of doubly fed induction generator wind turbines using adaptive maximum power point tracking," *Energy*, 111 (2016) 377-388.
- [32] K. Sahnouni, F. B. Ammar, "An improved variable structure control of a shunt active filter," *Seventh International Conference on Power Electronics and Variable Speed Drives (IEE Conf. Publ. No. 456)*, 1998, Pages: 46-50.

- [33] Mohamad Alaa Eddin Alali, "Contribution l'Etude des Compensateurs Actifs des Réseaux Electriques Basse Tension," , *Docteur de l'Université Louis Pasteur Strasbourg I, Discipline : Génie électrique*, 12 Septembre 2002.
- [34] Herbert L. Ginn, III, Leszek S. Czarnecki, "An Optimization Based Method for Selection of Resonant Harmonic Filter Branch Parameters," *IEEE Transactions on Power Delivery*, Vol. 21, no. 3, July 2006.
- [35] Jingyang Fang, Guochun Xiao, "An LCCL Filter and Its Application to a Half-Bridge APF," *9th International Conference on Power Electronics-ECCE Asia*, June 1 - 5, 2015 / 63 Convention Center, Seoul, Korea.

BIOGRAPHY OF AUTHORS



Mahieddine Hacil He received his Engineering degree in Electrical Engineering from the Department Electrical Engineering of Larbi Ben M'hidi University, Oum El Bouaghi, Algeria, in 1999. and M.S, Ph.D. degrees from the Department of Electrical Engineering of Mentouri Brothers University, Constantine, Algeria, in 2004, 2012 respectively, where he now works as a professor. His research area is on Power electronic, Power quality and Renewable energy sources.



Laid Zarour He received his B.S., M.S., and Ph.D. degrees from the Department of Electrical Engineering of Mentouri Brothers University, Constantine, Algeria, in 2002, 2005, and 2010, respectively, where he now works as a professor. His research interests are power electronics and applications in photovoltaic systems.



Lamri Louze He received his B.S., M.S., and Ph.D. degrees from the Department of Electrical Engineering of Mentouri Brothers University, Constantine, Algeria, in 2000, 2003, and 2010, respectively, where he now works as a professor. His research area is on Diagnostic, Power electronic and Renewable energy sources.